



## AUTO Soils Consolidator

Code: [25-0500/09](#)

Product Group: [AUTO Soils Consolidator](#), [AUTO Soils Consolidator](#)

Designed and engineered for geotechnical laboratories to deliver new levels of efficiency in testing procedures.

The one-dimensional consolidation test is the most common, and sometimes referred to as the oedometer or incremental loading oedometer test. Radially constrained samples are loaded in a sequence starting with a stress close to the overburden pressure of the sample. The loading is then doubled for each stage; typically 4 or 5 times, with a final unloading sequence.

NOW SUPPLIED COMPLETE WITH DS8.0 One-Dimensional Consolidation Software  
[\[/Product/ds80-onedimensional-consolidation-software\]](#)

### FEATURES:

- Available in one universal model 90-240 V AC, 50-60 Hz, 1 ph
- 7" waterproof, colour, graphical touchscreen
- Multi language
- No compressor - stepper motor improves accuracy across entire 15 kN load range
- Variable speed to suit sample type
- Can change target loads during a test
- Flexible reports
- Compatible with latest DS8 software

### CUSTOMER BENEFITS:

- Fully automatic - reduces testing time
- Compact footprint - saves laboratory space
- Save configurations for easy set-up of multiple cells and repeat tests
- Control up to 16 AUTO Soils Consolidator machines from one PC - improves laboratory efficiency
- Ability to include manual consolidation frames - avoids redundancy

- Wide range of sample cells

Please note: S type load cell and a linear variable displacement transducer (LVDT) must be ordered seperately

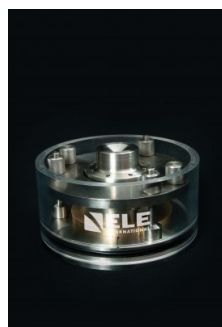
---

## Specification

Frame capacity	15 kN
Travel	15 mm
Standards	BS 1377-5, superseded by ISO 17892-5, ASTM D2435/D2435M, AASHTO T216, ASTM D4546
Cell sizes (mm)	35, 50, 70, 75, 100, 112.8
Cell sizes (inches)	2, 2.416, 2.5, 3, 4
Max sample size	≤ 112.8 mm
Max piston travel	26 mm
Speed	10 mm per minute
Fast approach speed	40 mm per minute
Max number of units per PC	16
Unit display	High resolution, 7" colour
Dimensions	290 x 360 mm
Weight	32 kg
Clearance vertical/Horizontal	270/220 mm
Power supply	90-240 V AC, 50-60 Hz, 1 ph

---

## Accessories



### 100mm Stainless Steel Consolidation Cell

Code: [25-0510](#)



## 112.8mm Stainless Steel Consolidation Cell

Code: [25-0520](#)

---



## 15 kN S Type Load Cell (lead 0.7 m)

Code: [27-1565](#)

---



## 15 mm Displacement Transducer (lead 0.7 m)

Code: [27-1650](#)

---



## 2.416" Stainless Steel Consolidation Cell

Code: [25-0489](#)

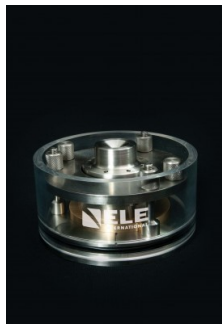
---



## 2.5" Stainless Steel Consolidation Cell

Code: [25-0490](#)

---



## 2" Stainless Steel Consolidation Cell

Code: [25-0499](#)

---



## 3" Stainless Steel Consolidation Cell

Code: [25-0469](#)

---



## 35mm Stainless Steel Consolidation Cell

Code: [25-0444](#)

---



## 4" Stainless Steel Consolidation Cell

Code: [25-0459](#)

---



## 50mm Stainless Steel Consolidation Cell

Code: [25-0446](#)

---



## 70 x 19 mm Stainless Steel Consolidation Cell

Code: [25-0449](#)

---



## 70mm Stainless Steel Consolidation Cell

Code: [25-0466](#)

---



## 75mm Stainless Steel Consolidation Cell

Code: [25-0467](#)

---



## AUTO Soils Consolidator Calibration Kit

Code: [25-0500/CAL](#)

---



## DS8.0 One-Dimensional Consolidation Software

Code: [27-1873](#)

---



## Wash Bottle

Code: [82-2500](#)

---

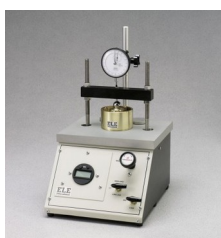
## Alternatives



## Consolidation Frame One Dimensional Consolidation Incremental Loading Device.

Code: [25-0402](#)

---



## Pneumatic Consolidation Apparatus

Code: [25-0560](#)