



Slump Cone

Code: [34-0110](#)

Product Group: [Slump Test, Slump Cones](#)

Complies with EN 12350-2 (BS 1881-102), ASTM C143/C143M, AASHTO T119

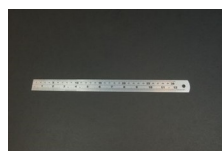
Standards

ASTM C143/C143M, ASTM C192, AASHTO T119

Specification

Construction	Seamless, heavy-gauge spun steel; 0.45" (1.1 mm) min. Thickness.
Finish	Plated for rust and corrosion resistance.
Dimensions	100 mm top diam. X 200 mm bottom diam. (without foot pieces) x 300 mm h.
Weights	Net 5.5 lbs (2.5kg)

Accessories



300 mm Stainless Steel Rule.

Code: [34-0140](#)



Aluminium Scoop Large

Code: [81-0220](#)



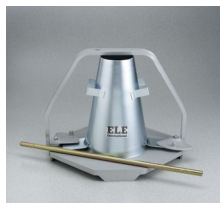
Base Plate for Slump Test.

Code: [34-0160](#)



Cement Pan

Code: 34-0152



Graduated Tamping Rod

Code: 34-0132



Sample Tray - 1200 x 1160 x 50 mm

Code: 81-4230



Shovel - With flat blade

Code: 81-0240



Slump Cone Base

Code: 34-0150



Slump Cone Funnel

Code: 34-0180



Tamping Rod 16mm Dia X 600mm long hemispherical at both ends.

Code: 34-0130

Spares/Consumables



Stopwatch

Code: 81-0521

Alternatives



Metal Slump Cone - English

Code: 34-0108